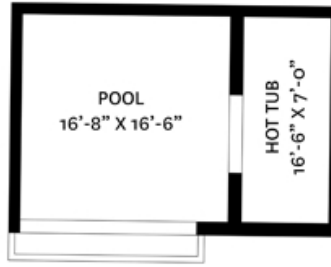


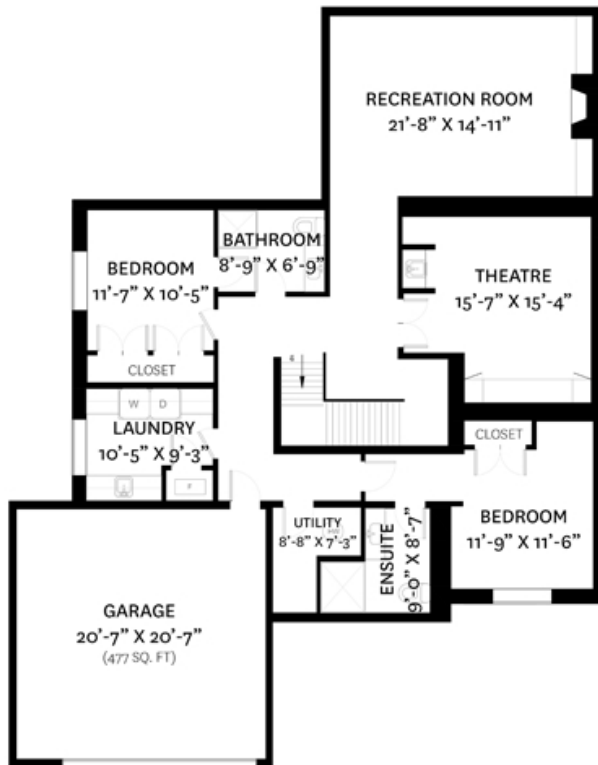
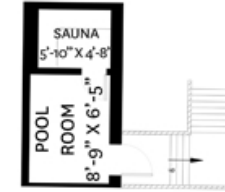
# 858 CLEMENTS AVENUE, NORTH VANCOUVER, BC

LOWER FLOOR TOTAL: 1706 SQ. FT  
 MAIN FLOOR TOTAL: 2102 SQ. FT  
 UPPER FLOOR TOTAL: 1473 SQ. FT  
**TOTAL: 5281 SQ. FT**

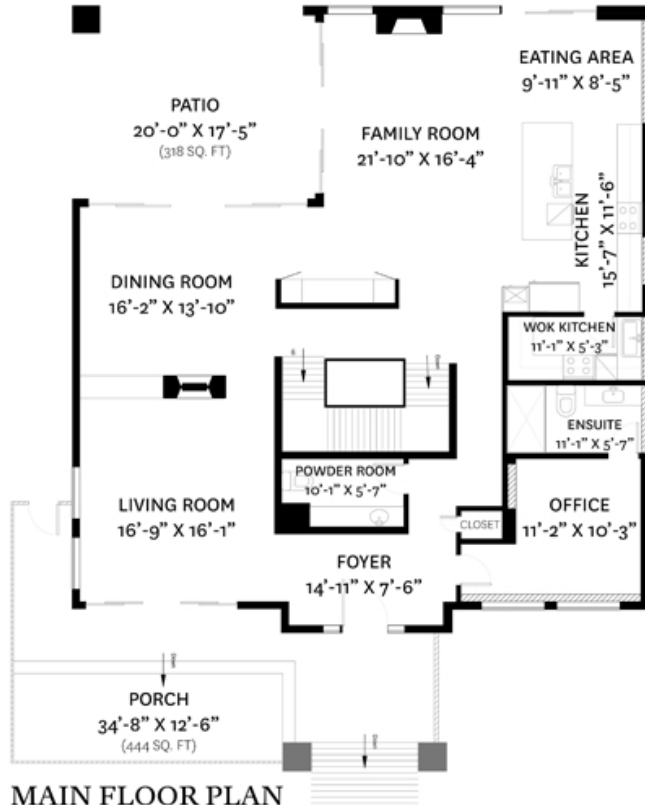
**GARAGE: 477 SQ. FT**  
**POOL + HOT TUB: 526 SQ. FT**  
**POOL ROOM + SAUNA: 119 SQ. FT**  
**PATIO: 318 SQ. FT**  
**PORCH: 444 SQ. FT**  
**BALCONIES: 347 SQ. FT**



**POOL FLOOR PLAN**  
 Ceiling Height: 9'-10"



**LOWER FLOOR PLAN**  
 Ceiling Height: 7'-9"



**MAIN FLOOR PLAN**  
 Ceiling Height: 8'-7"



**UPPER FLOOR PLAN**  
 Ceiling Height: 8'-0"

**ARASH BAHMANI**  
 PERSONAL REAL ESTATE CORPORATION

**Arash Bahmani** PREC\*  
 778-861-2245  
 info@soldbyarash.ca

floor plan designed by  
 ishot.ca Enterprises Inc.  
 604-368-7979  
 http://ishot.ca