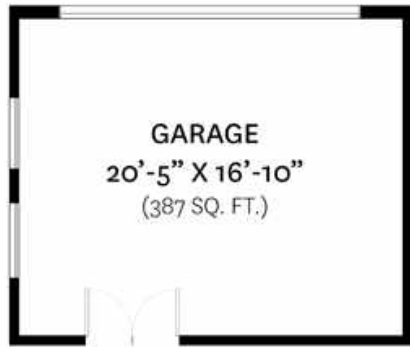


457 EAST 8TH STREET, NORTH VANCOUVER, BC

LOWER FLOOR TOTAL: 1081 SQ. FT.
 MAIN FLOOR TOTAL: 880 SQ. FT.
 TOTAL: 1961 SQ. FT.

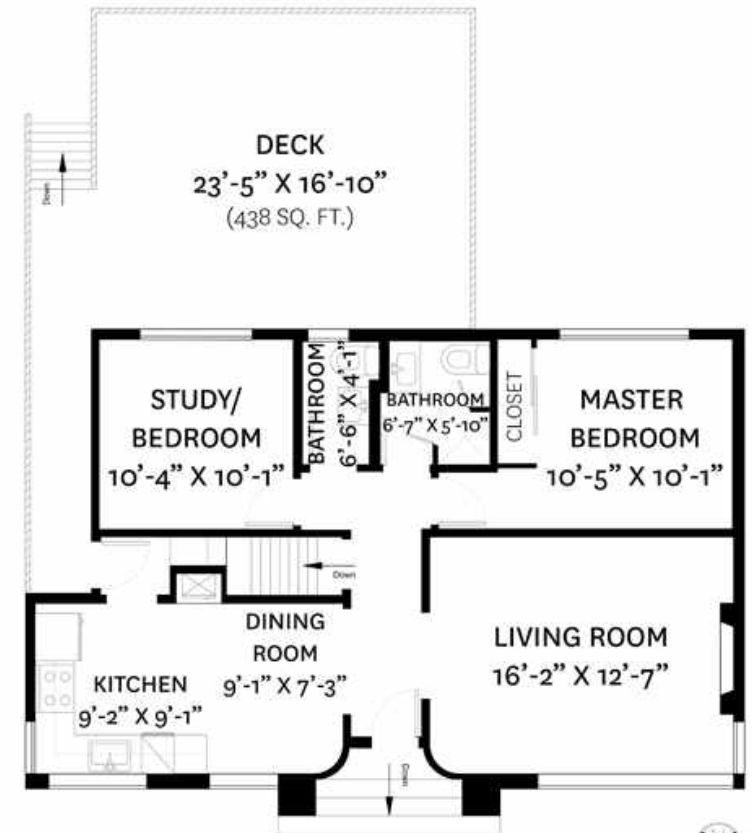
GARAGE: 387 SQ. FT.
 PATIO: 357 SQ. FT.
 DECK: 438 SQ. FT.



GARAGE FLOOR PLAN



LOWER FLOOR PLAN
 Ceiling Height: 7'-2"



MAIN FLOOR PLAN
 Ceiling Height: 7'-11"

